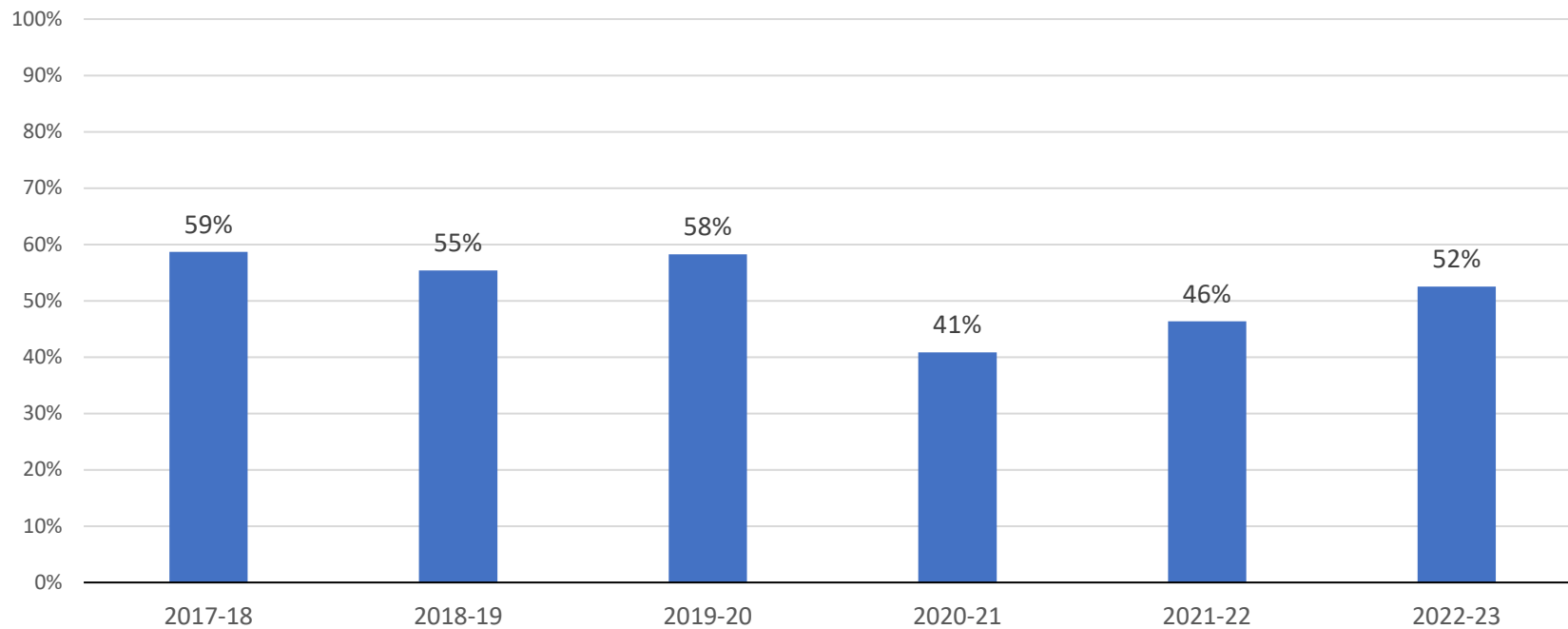


Course success rates by demographics by year (2017-18 through 2022-23)

Course success rate: The percent of course enrollments completed with a C grade or higher or S or P grade.

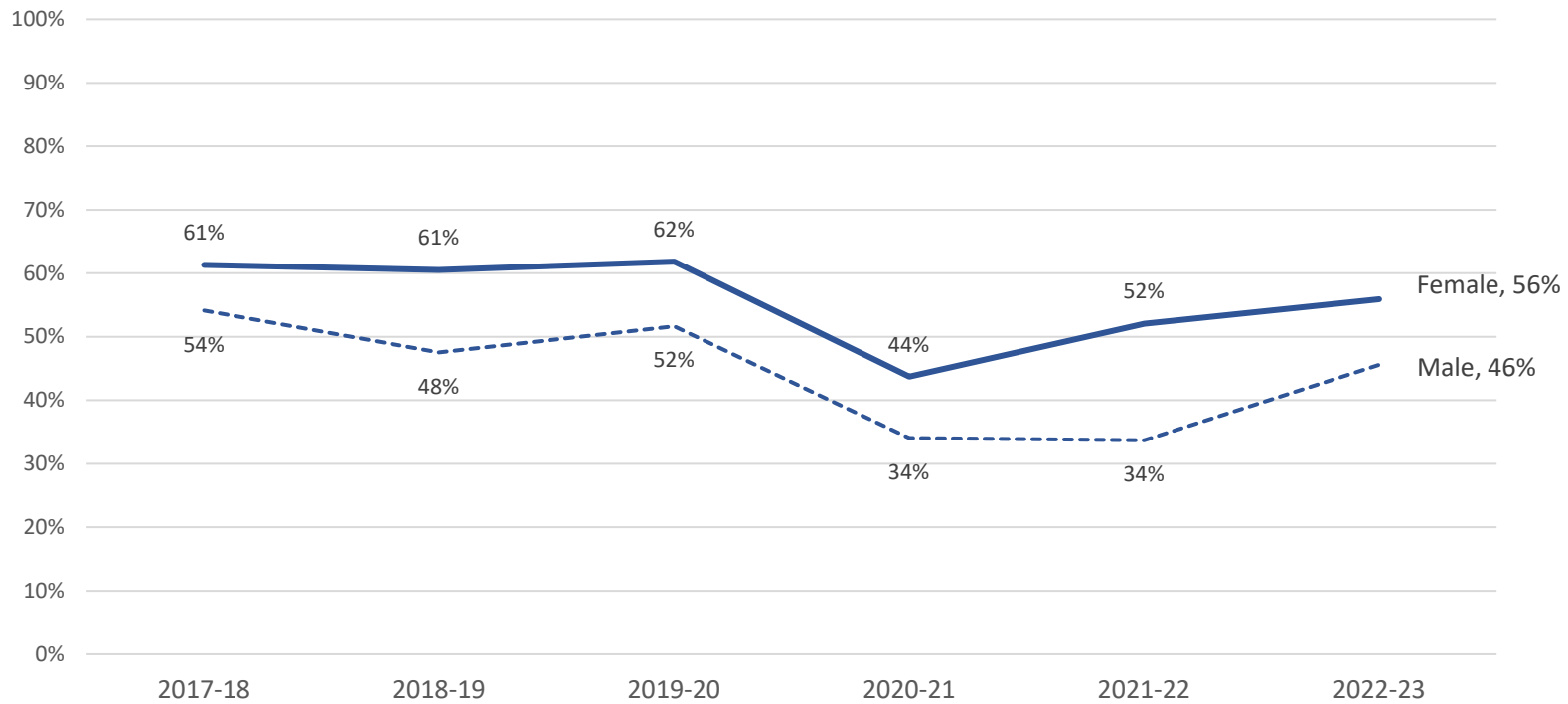
Overall course success rates (all disciplines combined)

Year	# of enrollments	% successful
2017-18	2,615	59%
2018-19	2,305	55%
2019-20	2,316	58%
2020-21	2,932	41%
2021-22	2,362	46%
2022-23	2,526	52%
Total	15,056	52%



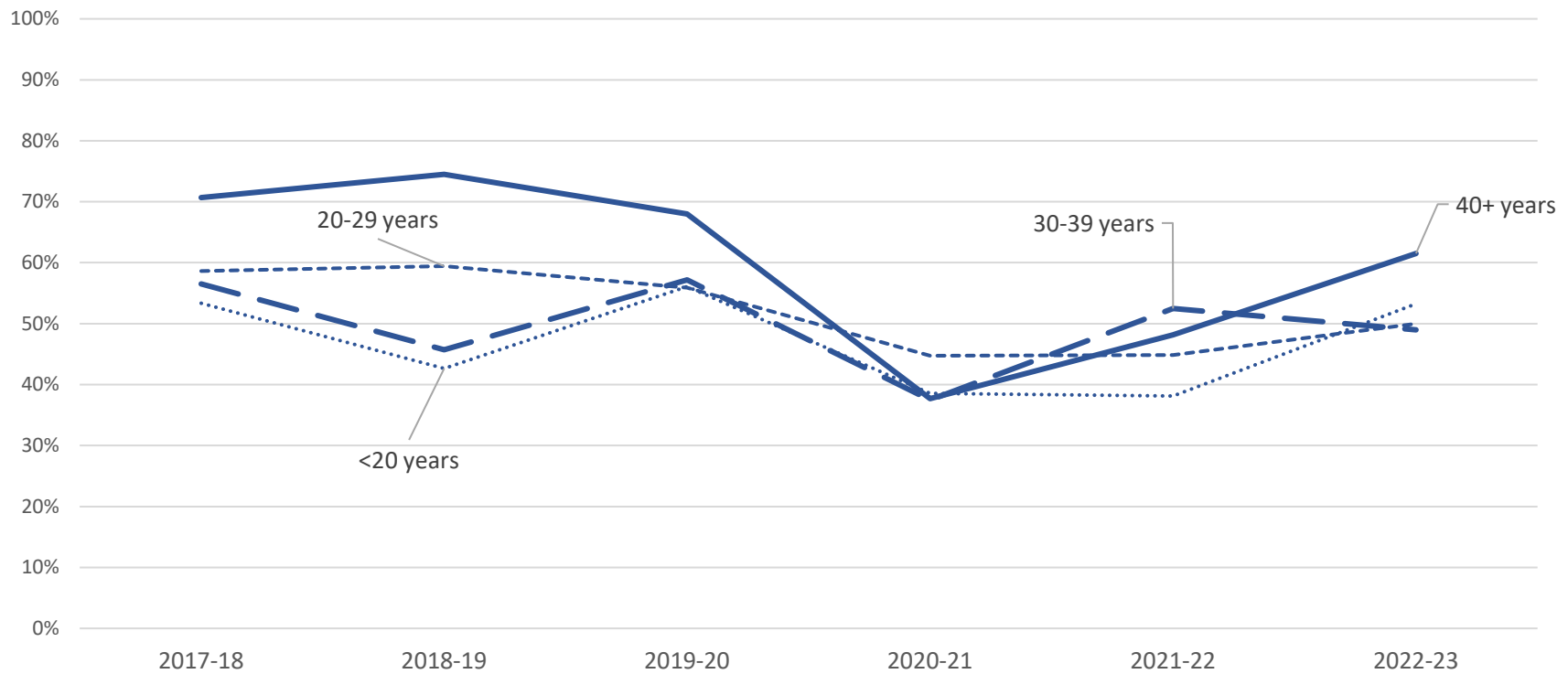
Course success rates by year and gender

Year	Female		Males		Total	
	# of enrollments	% successful	# of enrollments	% successful	# of enrollments	% successful
2017-18	1,656	61%	959	54%	2,615	59%
2018-19	1,386	61%	919	48%	2,305	55%
2019-20	1,501	62%	815	52%	2,316	58%
2020-21	2,054	44%	878	34%	2,932	41%
2021-22	1,632	52%	730	34%	2,362	46%
2022-23	1,692	56%	834	46%	2,526	52%
Total	9,921	55%	5,135	45%	15,056	52%



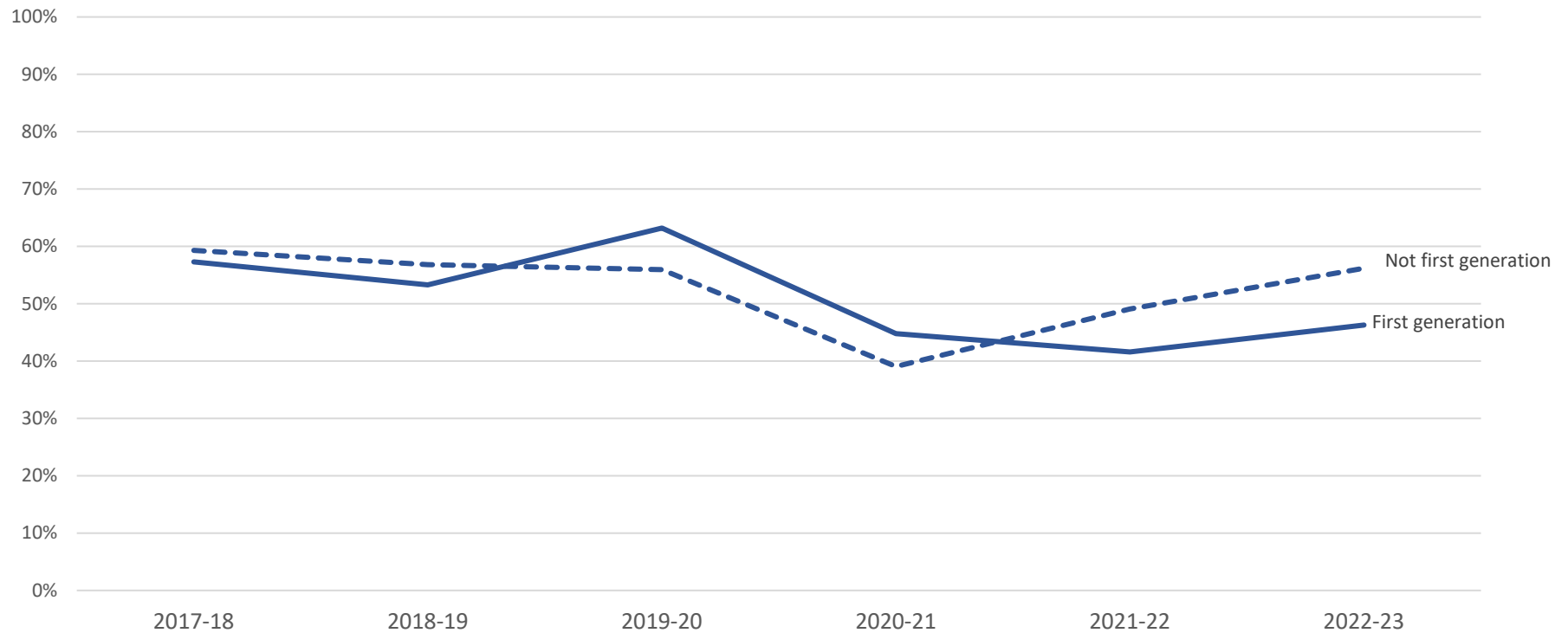
Course success rates by year and age

Year	<20		20-29		30-39		40+		Total	
	# of enrollments	% successful	# of enrollments	% successful	# of enrollments	% successful	# of enrollments	% successful	# of enrollments	% successful
2017-18	596	53%	1,276	59%	398	57%	341	71%	2,611	59%
2018-19	556	43%	1,129	59%	326	46%	294	74%	2,305	55%
2019-20	469	56%	1,052	56%	397	57%	397	68%	2,315	58%
2020-21	402	39%	1,272	45%	798	37%	459	38%	2,931	41%
2021-22	362	38%	995	45%	625	52%	380	48%	2,362	46%
2022-23	569	53%	1,096	50%	439	49%	421	62%	2,525	52%
Total	2,954	48%	6,820	52%	2,983	48%	2,292	59%	15,049	52%



Course success rates by year and first generation status

Year	First generation		Not first generation		Total	
	# of enrollments	% successful	# of enrollments	% successful	# of enrollments	% successful
2017-18	841	57%	1,774	59%	2,615	59%
2018-19	946	53%	1,359	57%	2,305	55%
2019-20	739	63%	1,577	56%	2,316	58%
2020-21	904	45%	2,028	39%	2,932	41%
2021-22	856	42%	1,506	49%	2,362	46%
2022-23	942	46%	1,584	56%	2,526	52%
Total	5,228	51%	9,828	52%	15,056	52%



Course success rates by year and dependents status

Discipline	Without dependents		With dependents		Total	
	# of enrollments	% successful	# of enrollments	% successful	# of enrollments	% successful
2017-18	135	67%	2,466	58%	2,601	59%
2018-19	93	53%	2,212	55%	2,305	55%
2019-20	166	67%	2,148	58%	2,314	58%
2020-21	229	42%	2,698	41%	2,927	41%
2021-22	257	52%	2,102	46%	2,359	46%
2022-23	253	62%	2,273	51%	2,526	52%
Total	1,133	56%	13,899	51%	15,032	52%

